



13 LYTHAM ROAD LEICESTER

5 Bedroom Student Property

Ground Floor

Bedroom 3.66m (12') x 2.93m (9'8")

Window to front, Storage cupboard, open plan, door to:

Living Room 3.91m (12'10") x 3.74m (12'3")

Storage cupboard, door to:

Stairs, door to:

Open plan, door to:

Kitchen 3.57m (11'9") x 2.30m (7'7")

Window to side, Storage cupboard, double door, open plan, door to:

Window to side.

Bathroom

Window to side, door.

First Floor

Stairs, open plan, door to:

Bedroom 3.66m (12') x 2.87m (9'5")

Window to front, Storage cupboard, double door, door to:

Storage cupboard, double door, door to:

Bedroom 3.44m (11'3") x 2.89m (9'6")

Window to rear, Storage cupboard, double door, door to:

Bedroom 3.01m (9'10") x 2.30m (7'7")

Window to rear, Storage cupboard, door, double door.

Second Floor

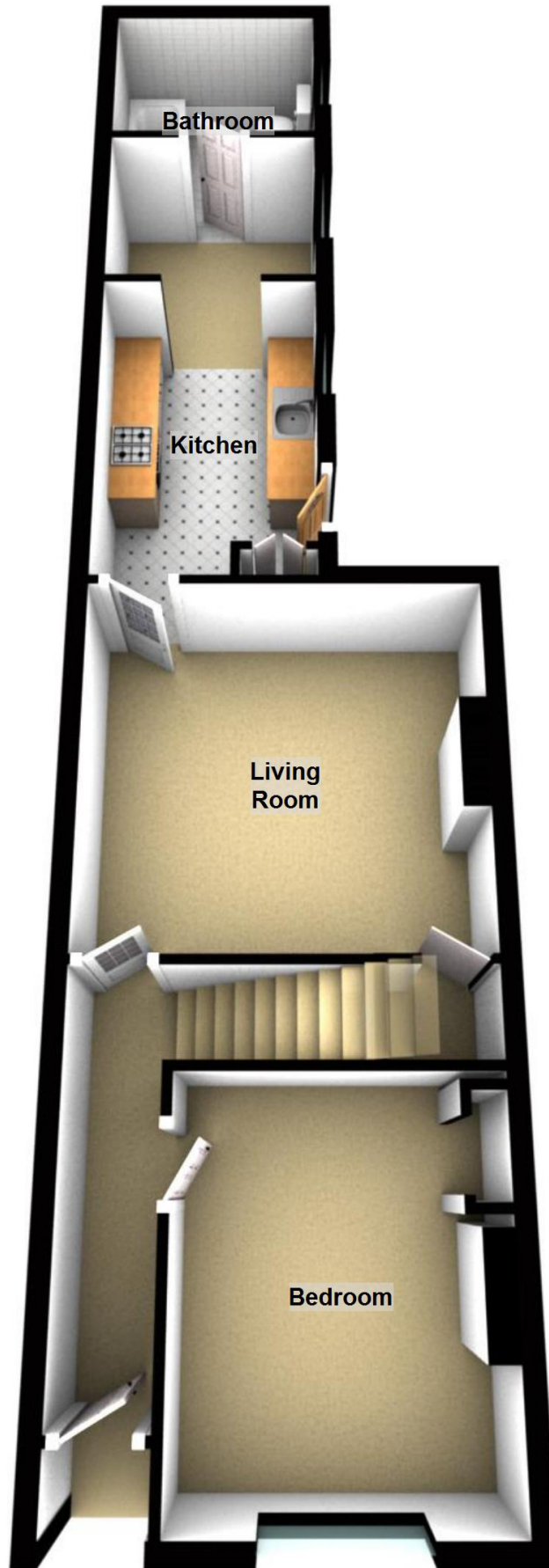
Bedroom 5.68m (18'8") x 2.41m (7'11")

Window to front, window to rear, Storage cupboard, double door, door to:

Shower Room

Ground Floor

Approx. 50.2 sq. metres (540.1 sq. feet)

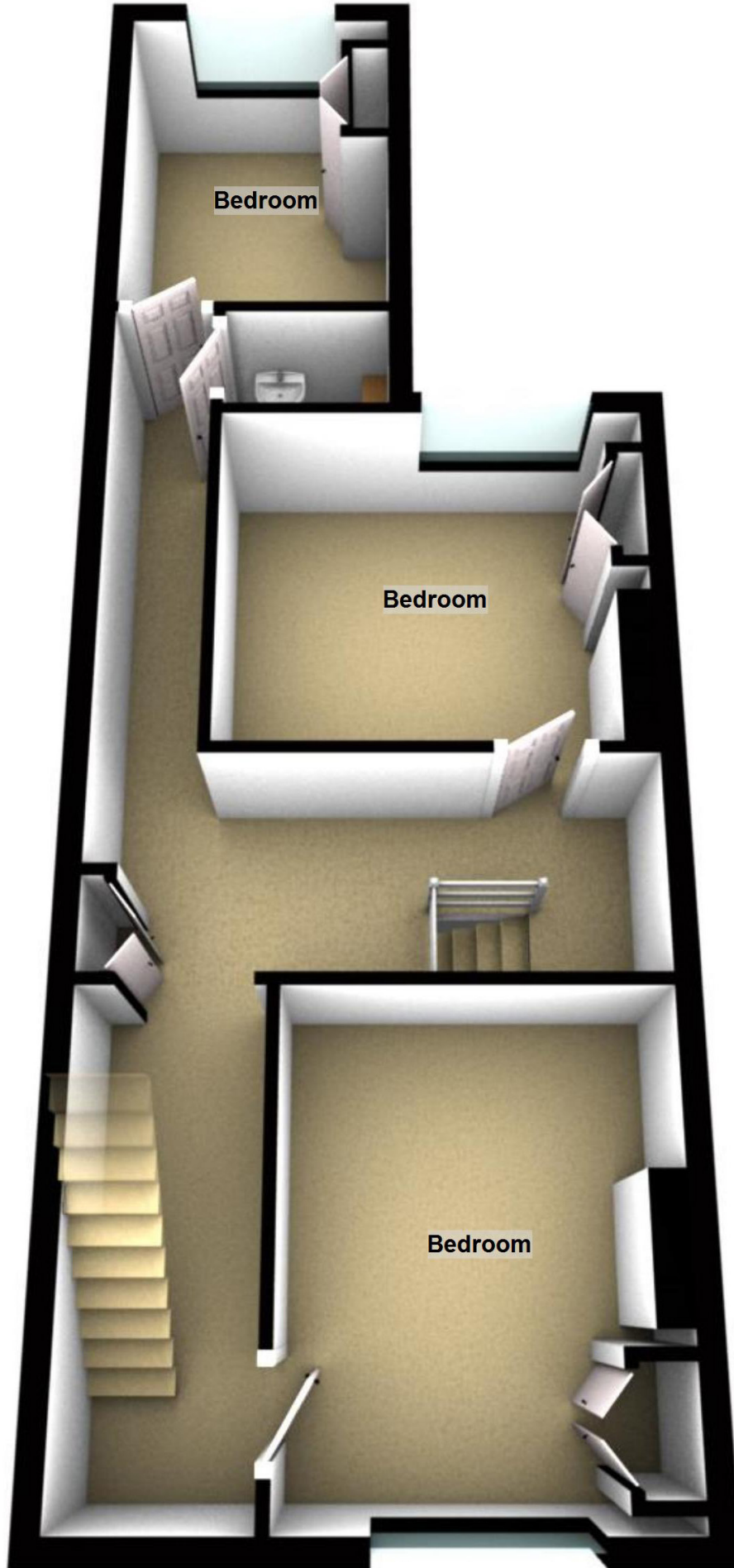


Total area: approx. 118.7 sq. metres (1278.2 sq. feet)

This Floor Plan and the Measurements are a guide Only.
Plan produced using PlanUp.

First Floor

Approx. 46.3 sq. metres (497.8 sq. feet)



Second Floor

Approx. 22.3 sq. metres (240.2 sq. feet)

