



193 CLARENDON PARK ROAD LEICESTER

7 Bedroom Student Property

Ground Floor

Bedroom 3.25m (10'8") x 2.52m (8'3")
Storage cupboard, double door, door to:

Bedroom 3.25m (10'8") x 2.00m (6'7")
Window to side, Storage cupboard, double door, door to:

Stairs, door to:

Living Room 4.28m (14') x 3.34m (10'11")
Window to rear, two open plan, door to:

Kitchen/Breakfast Room 6.61m (21'8") x 2.70m (8'10")
Three windows to side, door.

First Floor

Bedroom 3.90m (12'9") max x 2.96m (9'8")
Bay window to front, Storage cupboard, double door, door to:

Window to front, stairs, open plan, door to:

Bedroom 3.53m (11'7") x 3.34m (10'11")
Window to rear, Storage cupboard, double door, door to:

Shower Room

Window to side, door to:

Bedroom 2.72m (8'11") x 2.70m (8'10")
Window to rear, Storage cupboard, door, double door.

Second Floor

Door to:

Bedroom 3.21m (10'6") x 2.94m (9'8")

Window to front, Storage cupboard, double door, door to:

Bedroom 3.46m (11'4") x 2.57m (8'5")

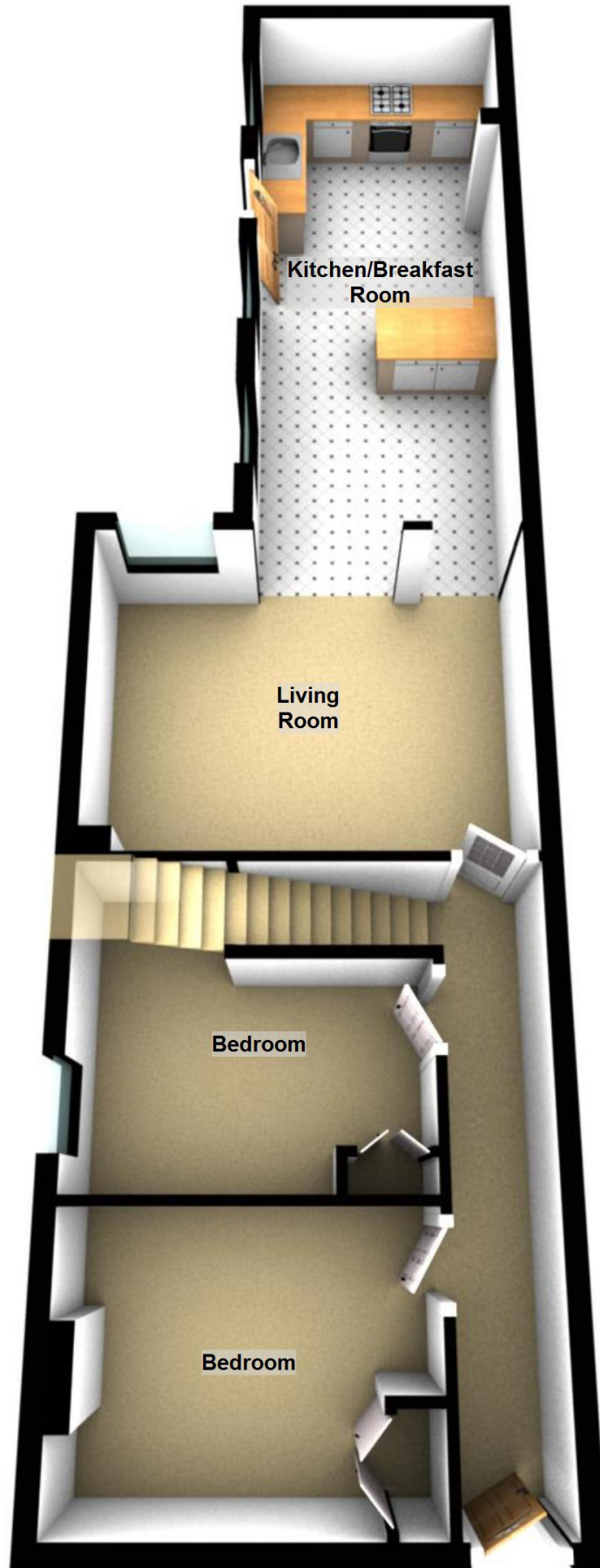
Window to rear, Storage cupboard, double door, door to:

Shower Room

Window to rear.

Ground Floor

Approx. 56.6 sq. metres (609.5 sq. feet)

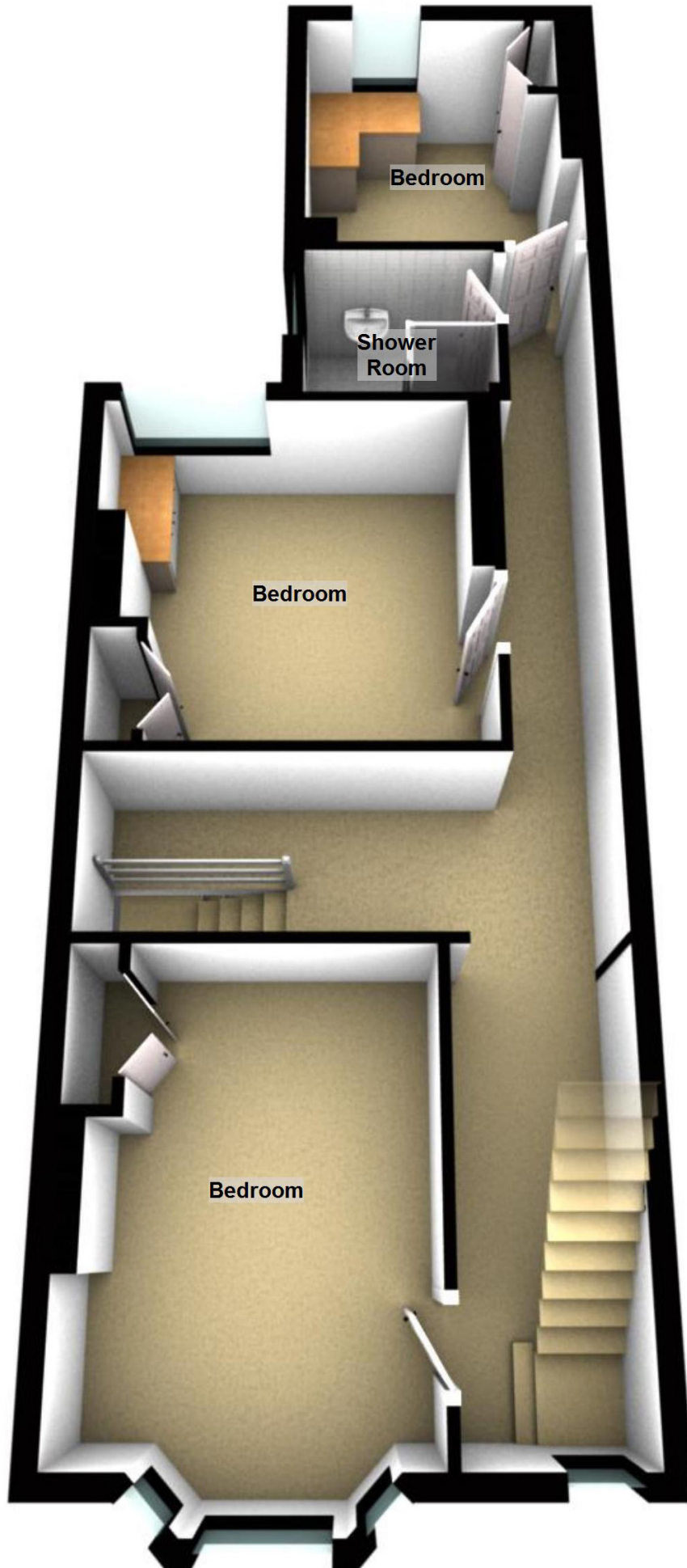


Total area: approx. 135.9 sq. metres (1463.3 sq. feet)

This Floor Plan and the Measurements are a guide Only.
Plan produced using PlanUp.

First Floor

Approx. 53.0 sq. metres (570.8 sq. feet)



Second Floor

Approx. 26.3 sq. metres (283.1 sq. feet)

