



211 CLARENDON PARK ROAD LEICESTER

6 Bedroom Student Property

Ground Floor

Bedroom 3.69m (12'1") max x 3.03m (9'11")

Bay window to front, two Storage cupboard, double door, open plan, door to:

Living Room 3.80m (12'6") x 3.25m (10'8")

Double door, door to:

Stairs, door to:

Kitchen / Breakfast Room 6.02m (19'9") x 2.50m (8'2")

Three windows to side.

Shower Room

Window to side.

Bedroom 5.15m (16'11") x 2.50m (8'2")

Two windows to side, window to rear, Storage cupboard, open plan, door to:

Two doors, open plan.

First Floor

Bedroom 4.76m (15'7") x 3.69m (12'1")

Window to front, Storage cupboard, double door, door to:

Bedroom 3.80m (12'6") x 2.93m (9'7")

Window to rear, Storage cupboard, open plan, door to:

Stairs.

Bathroom

Secondary glazed window to side, door to:

Bedroom 2.61m (8'7") x 2.50m (8'2")

Window to rear, Storage cupboard, double door, door.

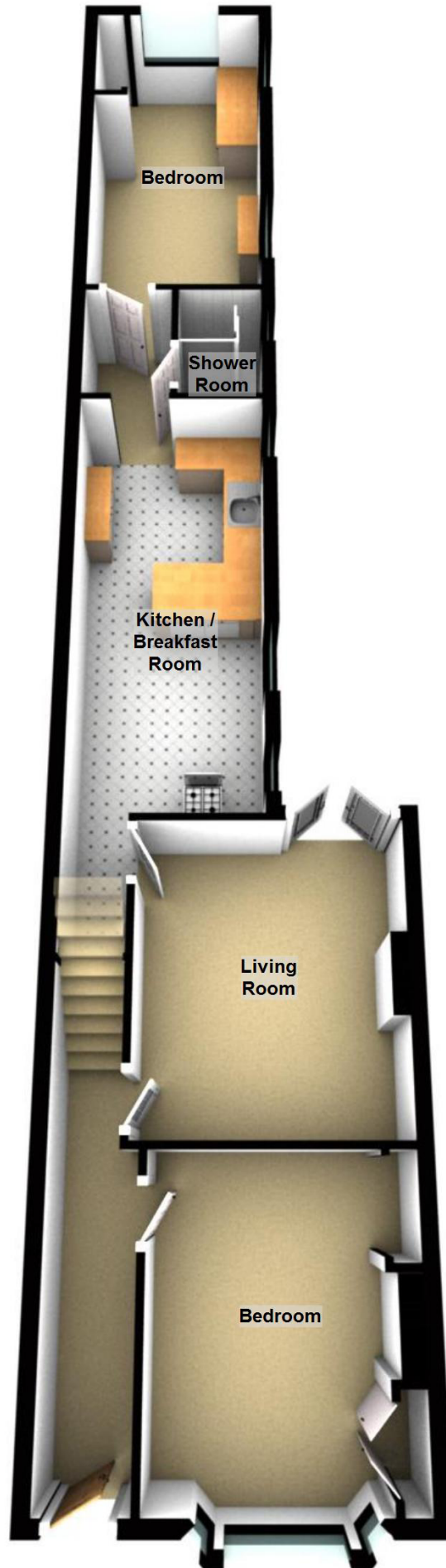
Second Floor

Bedroom 5.42m (17'9") x 1.02m (3'4")

Window to rear, two windows to front, Storage cupboard, open plan.

Ground Floor

Approx. 64.8 sq. metres (697.0 sq. feet)

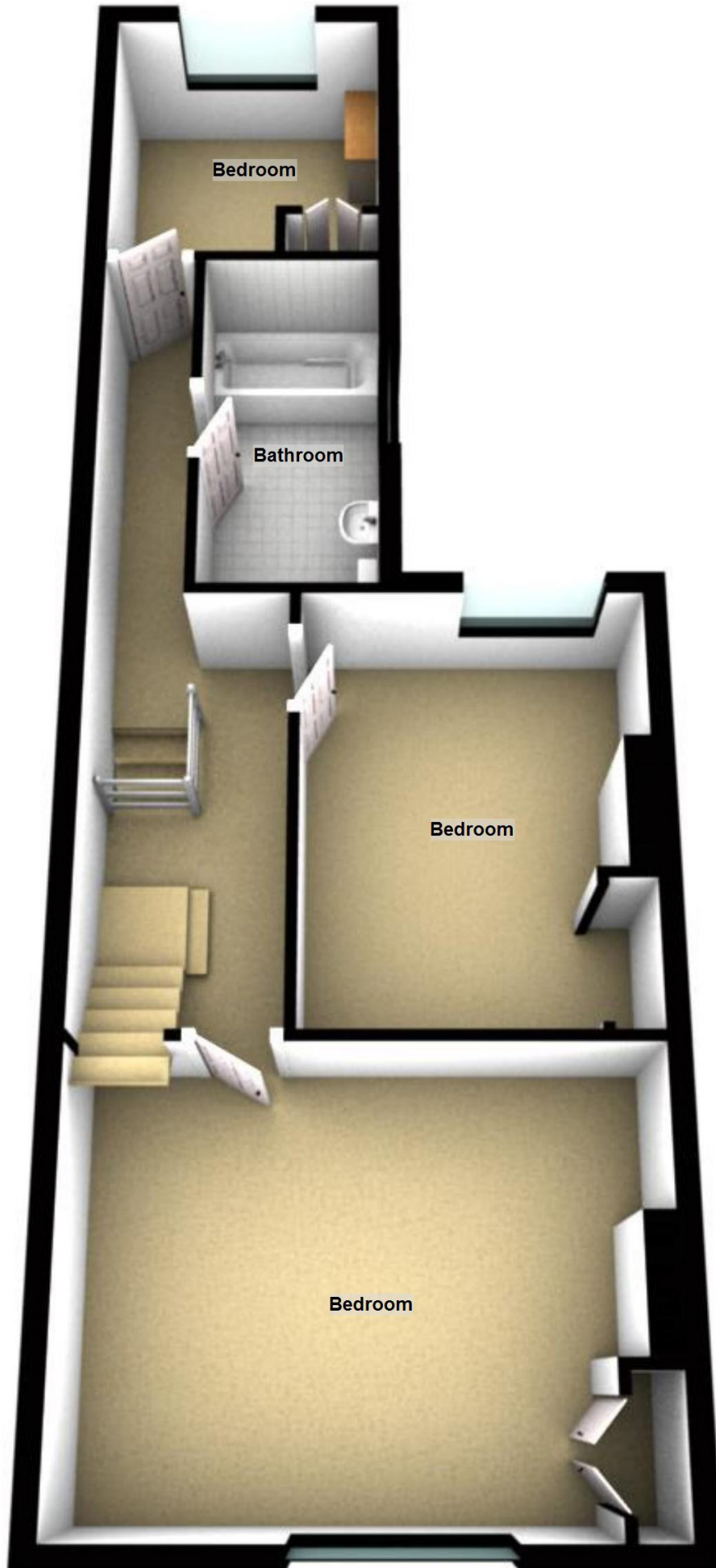


Total area: approx. 137.9 sq. metres (1484.6 sq. feet)

This Floor Plan and the Measurements are a guide Only.
Plan produced using PlanUp.

First Floor

Approx. 51.2 sq. metres (551.6 sq. feet)



Second Floor

Approx. 21.9 sq. metres (236.0 sq. feet)

