



## 46 LYTTON ROAD LEICESTER

5 Bedroom Student Property

### Ground Floor

**Bedroom** 3.68m (12'1") x 2.95m (9'8")

Window to front, Storage cupboard, double door, door to:

**Living Room** 3.96m (13') x 3.43m (11'3")

Window to rear, stairs, door to:

Storage cupboard, door to:

Open plan, door to:

**Kitchen** 3.42m (11'3") x 2.24m (7'4")

Window to side, open plan, door to:

Storage cupboard, door to:

**Bathroom**

Window to side, door.

## First Floor

**Bedroom** 3.68m (12'1") x 3.03m (9'11")

Window to front, Storage cupboard, double door, door to:

Stairs.

**Bedroom** 4.35m (14'3") x 3.50m (11'6")

Window to rear, Storage cupboard, door to:

**Bedroom** 3.42m (11'3") x 2.24m (7'4")

Window to rear, Storage cupboard, double door, door.

## Second Floor

**Bedroom** 6.66m (21'10") x 2.51m (8'3")

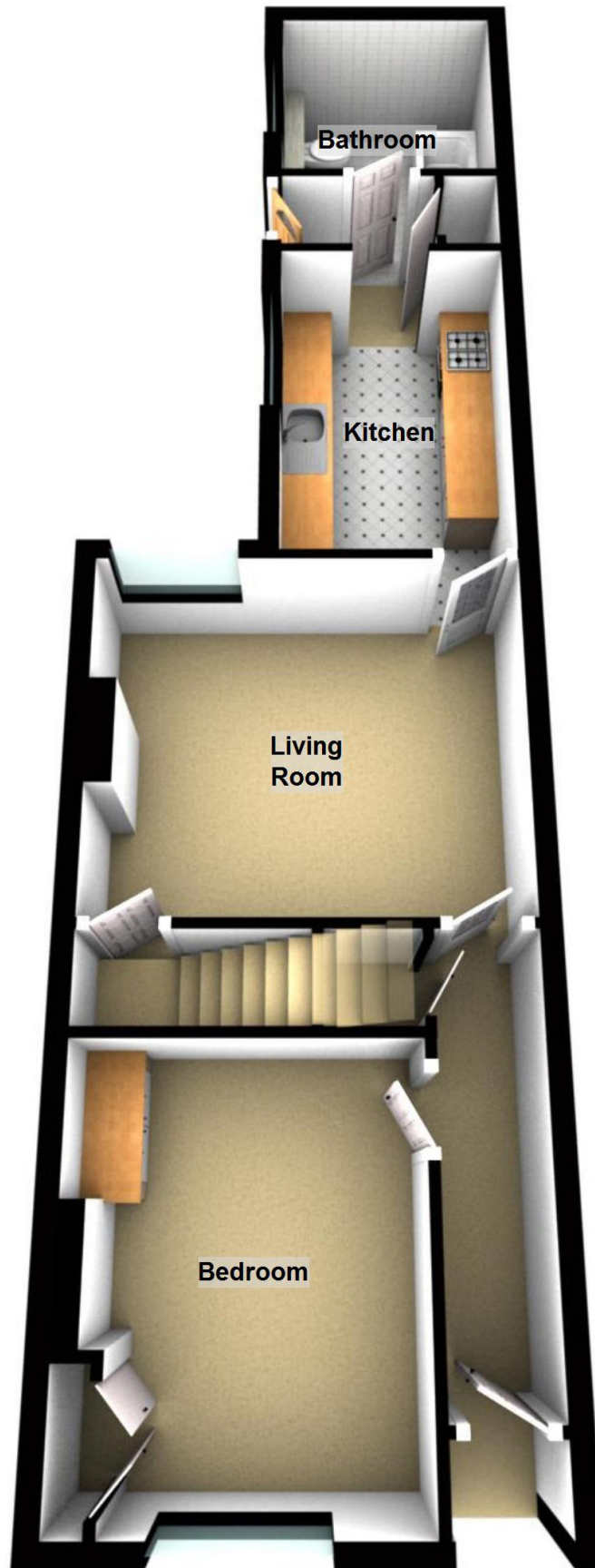
Window to rear, window to front, door to:

**Shower Room**

Window to rear, door.

# Ground Floor

Approx. 47.0 sq. metres (505.9 sq. feet)

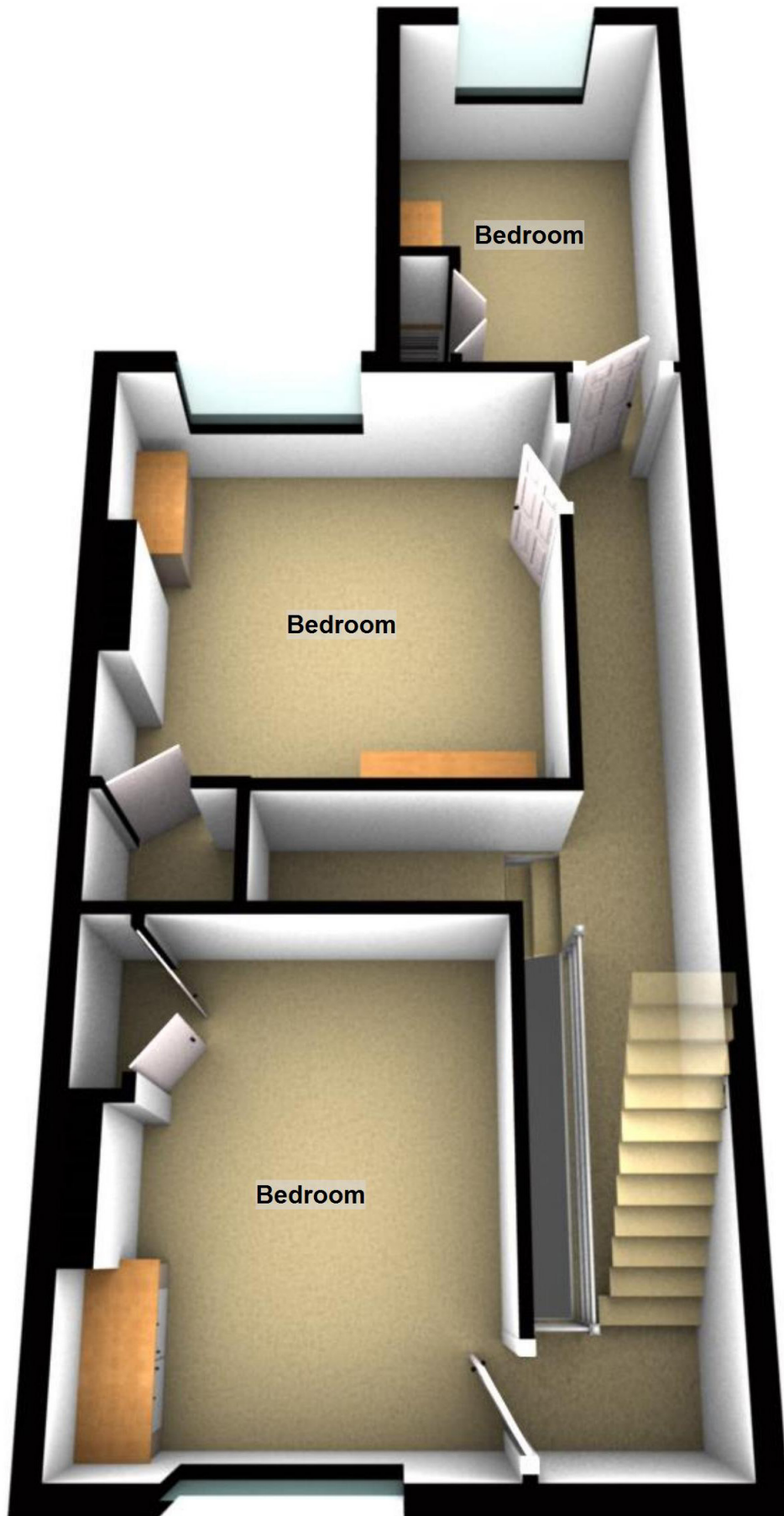


Total area: approx. 118.0 sq. metres (1270.4 sq. feet)

This Floor Plan and the Measurements are a guide Only.  
Plan produced using PlanUp.

# First Floor

Approx. 44.5 sq. metres (479.3 sq. feet)



## Second Floor

Approx. 26.5 sq. metres (285.3 sq. feet)

